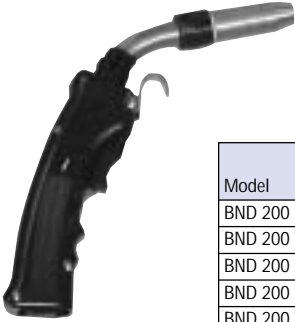


## BND 200 Air-Cooled Mig Welding Gun

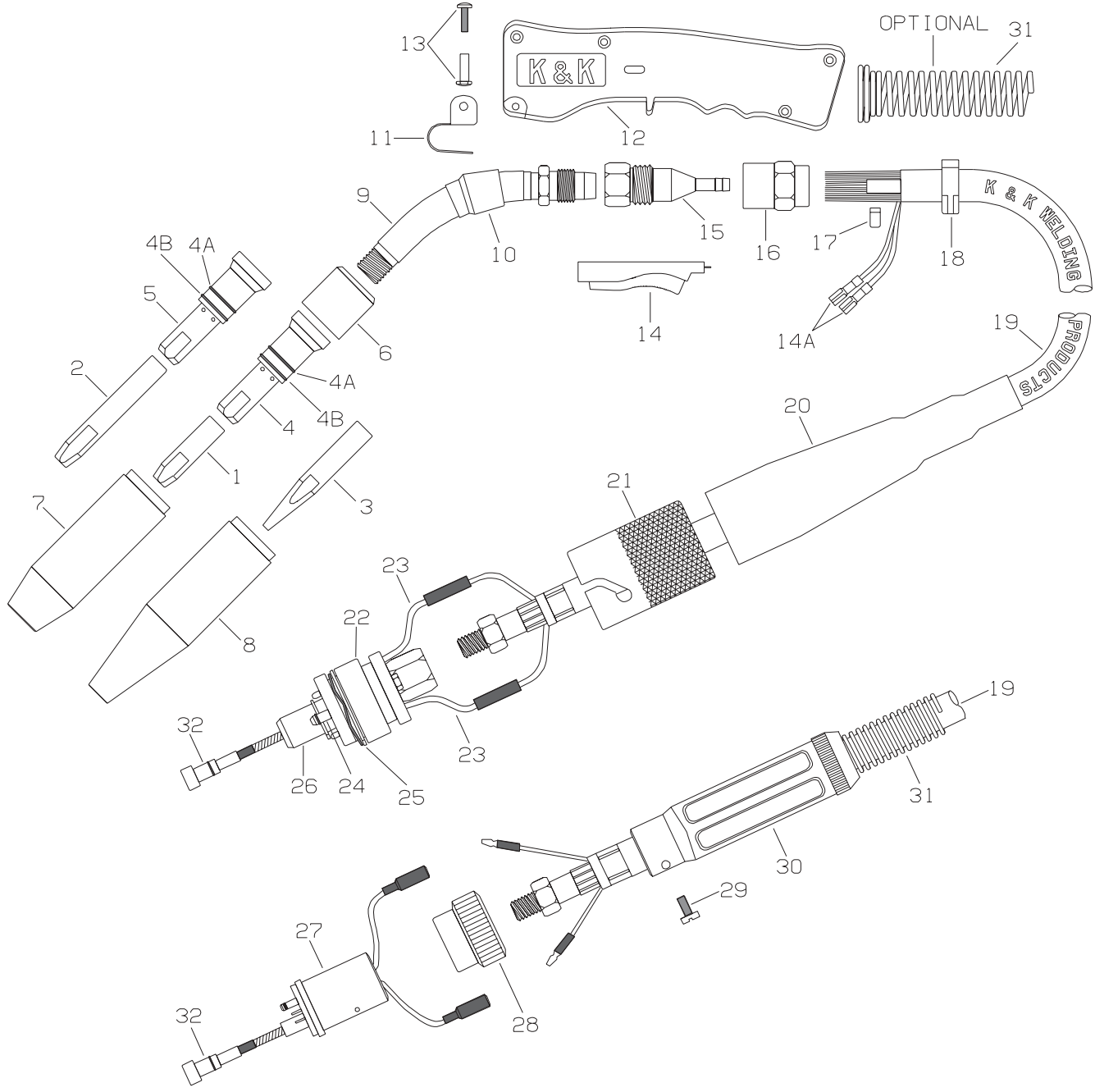


Model	Part No.			Description
	10 ft	12 ft	15 ft.	
BND 200	B2-4210A	B2-4212A	B2-4215A	Air Cooled MIG Welding Gun Bernard DP.
BND 200	B2-4210AM	B2-4212AM	B2-4215AM	Air Cooled MIG Welding Gun Miller DP.
BND 200	B2-4210AE	B2-4212AE	B2-4215AE	Air Cooled MIG Welding Gun Euro DP.
BND 200	B2-4210AL	B2-4212AL	B2-4215AL	Air Cooled MIG Welding Gun Lincoln DP.
BND 200	B2-4210ALW	B2-4212ALW	B2-4215ALW	Air Cooled MIG Welding Gun Lincoln W.M.250
BND 200	B2-4210AT	B2-4212AT	B2-4215AT	Air Cooled MIG Welding Gun Tweco DP.

#	Part No.	Description
1	B7488	Contact Tip, .030" 0.8 mm
	B7489	Contact Tip, .035" 0.9 mm
	B7490	Contact Tip, .045" 1.2 mm
	B7491	Contact Tip, 1/16" 1.6 mm
	B7496	Contact Tip, .040" 1.0 mm
	B7497	Contact Tip, .023" 0.6 mm
	B7498	Contact Tip, .052" 1.4 mm
2	B1588	Contact Tip, Long, .030" 0.8 mm
	B1589	Contact Tip, Long, .035" 0.9 mm
	B1590	Contact Tip, Long, .045" 1.2 mm
	B1591	Contact Tip, Long, 1/16" 1.6 mm
	B1596	Contact Tip, Long, .040" 1.0 mm
3	B4280	Contact Tip Tapered, 1/16" 1.6 mm
	B4281	Contact Tip Tapered, .035" 0.9 mm
	B4282	Contact Tip Tapered, .045" 1.2 mm
	B4283	Contact Tip Tapered, .052" 1.4 mm
4	B4335	Head Assembly, STD
4A	B7126	O-Ring
4B	B7360	Retaining Ring
5	B4235	Head Assembly, For Long Contact Tip
6	B4323R	Silicone Cap
7	B4391	Nozzle - Brass 5/8" I.D.
	B4392	Nozzle - Brass 1/2" I.D.
	B4393	Nozzle - Copper 5/8" I.D.
8	B4295	Nozzle - Brass 11/32" I.D.
9	B4786	Body Tube Assembly, 200/300A
10	B4780	Insulator Hex Nut
11	B4238	Hang Up Hook
12	B1780006	Handle Kit
13	B1880004	Screw Kit
14	B5662	Trigger Assembly, 200/300A
14A	B2660001	Trigger Terminal
15	B4213B	End Fitting 200A
16	B4305	Cone Nut, 200/350A

#	Part No.	Description
17	B4991	Clamp, Conduit, 200/300A
18	B7669	Clamp Jacket, 200A
19	B4261TE	Cable Assembly, 10', 200A
	B4262TE	Cable Assembly, 12', 200A
	B4265TE	Cable Assembly, 15', 200A
20	B4903	Strain Relief
21	B4925	Locking Sleeve
22	B4901	Quick Connect Body
23	B4924	Lead Wire
24	B4919	Gas Pin Assembly
25	B4916	Wave Spring
25A	B4912	Snap Ring, Small
26	B4292	Power Pin, EZ
	B1199	EZ Feed Plug & Fitting
	B1199M	Connector Plug, Miller DP
	B4477	Power Pin Tip, Miller .030" - .045"
	B1199L	Connector Plug, Lincoln DP
	B1199LT	Connector Plug, L-Tec DP
	B1199L	Connector Plug, Lincoln DP
	B1199LT	Connector Plug, L-Tec DP
	B1199H	Connector Plug, Hobart DP
27	B5060	Euro Connector Plug
28	B4816	Euro Connector Nut
29	285-01-001	Adaptor SupportScrew
30	260-25-002	Adaptor Support
31	185-36-001	Cable Support, Spring
32	B43015	Liner Assembly, 15', .023" - .030"
	B43115	Liner Assembly, 15', .035" - .045"
	B43215	Liner Assembly, 15', .045" - .062'
	B43115X	Teflon Liner, 15', .035" - 3/64"
	B43015T	Liner Assembly, 15', .023" .030" Tweco
	B43115T	Liner Assembly, 15', .035" -.045" Tweco
	B43215T	Liner Assembly, 15', .045" -.062" Tweco
	B43115XT	Teflon Liner, 15', .035" - 3/64" Tweco

**BND 200 Air-Cooled Mig Welding Gun**



Rating:  
200A CO2 150A Mixed Gas  
@ 100% Duty Cycle.  
.023 0.6mm to .045" 1.2mm Wire

**BND 300 & BND 350 Air-Cooled Mig Welding Gun**

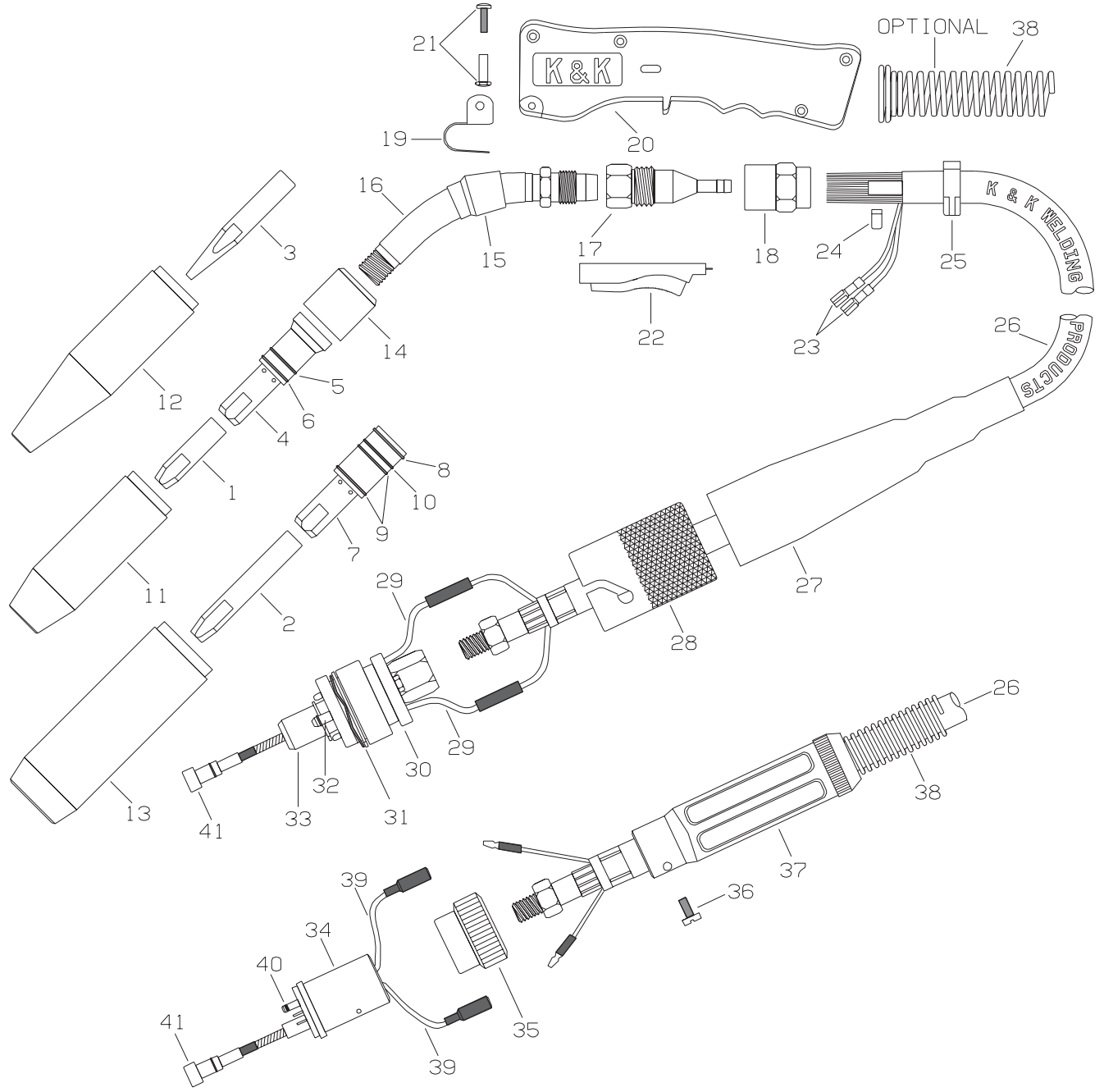


Model	Part No.			Description
	10 ft	12 ft	15 ft.	
BND 300	B2-4310A	B2-4312A	B2-4315A	Air Cooled MIG Welding Gun Bernard DP.
BND 300	B2-4310AM	B2-4312AM	B2-4315AM	Air Cooled MIG Welding Gun Miller DP.
BND 300	B2-4310AE	B2-4312AE	B2-4315AE	Air Cooled MIG Welding Gun Euro DP.
BND 300	B2-4310AL	B2-4312AL	B2-4315AL	Air Cooled MIG Welding Gun Lincoln DP.
BND 300	B2-4310AT	B2-4312AT	B2-4315AT	Air Cooled MIG Welding Gun Tweco DP.
BND 350	B2-43510A	B2-43512A	B2-43515A	Air Cooled MIG Welding Gun Bernard DP.
BND 350	B2-43510AM	B2-43512AM	B2-43515AM	Air Cooled MIG Welding Gun Miller DP.
BND 350	B2-43510AE	B2-43512AE	B2-43515AE	Air Cooled MIG Welding Gun Euro DP.
BND 350	B2-43510AL	B2-43512AL	B2-43515AL	Air Cooled MIG Welding Gun Lincoln DP.
BND 350	B2-43510AT	B2-43512AT	B2-43515AT	Air Cooled MIG Welding Gun Tweco DP.

#	Part No.	Description
1	B7488	Contact Tip, .030" 0.8 mm
	B7489	Contact Tip, .035" 0.9 mm
	B7490	Contact Tip, .045" 1.2 mm
	B7491	Contact Tip, 1/16" 1.6 mm
	B7496	Contact Tip, .040" 1.0 mm
	B7497	Contact Tip, .023" 0.6 mm
	B7498	Contact Tip, .052" 1.4 mm
2	B1588	Contact Tip, Long, .030" 0.8 mm
	B1589	Contact Tip, Long, .035" 0.9 mm
	B1590	Contact Tip, Long, .045" 1.2 mm
	B1591	Contact Tip, Long, 1/16" 1.6 mm
	B1596	Contact Tip, Long, .040" 1.0 mm
	B1597	Contact Tip, Long, .023" 0.6 mm
	B1598	Contact Tip, Long, .052" 1.4 mm
3	B4280	Contact Tip Tapered, 1/16" 1.6 mm
	B4281	Contact Tip Tapered, .035" 0.9 mm
	B4282	Contact Tip Tapered, .045" 1.2 mm
	B4283	Contact Tip Tapered, .052" 1.4 mm
4	B4335	Head Assembly, BND 300A
	B4235	Head Assembly For Long Contact Tip
5	B7126	O-Ring
6	B7360	Retaining Ring
7	B4435	Head Assembly, BND 350A
	B4635	Head Assembly, BND 350A Long Tip
8	B1510	Snap Ring, BND 350A
9	B7560	Retaining Ring, BND 350A
10	B7127	O-Ring, BND 350A
11	B4391	Nozzle - Brass 5/8" I.D.
	B4392	Nozzle - Brass 1/2" I.D.
	B4393	Nozzle - Copper 5/8" I.D.
12	B4295	Nozzle - Tapered 11/32" I.D.
13	B4491	Nozzle - Brass 3/4" I.D. BND 350A
	B4492	Nozzle - Brass 9/16" I.D. BND 350A
	B4591	Nozzle - Copper 3/4" I.D. BND 350A
	B4592	Nozzle - Copper 9/16" I.D. BND 350A
14	B4323R	Silicone Cap, BND 300A
	B4423R	Silicone Cap, BND 350A
15	B4780	Insulator Hex Nut
16	B4786	Body Tube Assembly, 200/300A
	B4790	Body Tube Assembly, 350/400A
17	B4313B	End Fitting, 300/350A

#	Part No.	Description
18	B4305	Cone Nut, 200/350A
19	B4238	Hang Up Hook
20	B1780006	Handle Kit
21	B1880004	Screw Kit
22	B5662	Trigger Assembly, 200/350A
23	B2660001	Trigger Terminal
24	B4991	Clamp, Conduit, 200/350A
25	B4823	Clamp Jacket, 300/350A
26	B4361TE	Cable Assembly, 10', 300/350A
	B4362TE	Cable Assembly, 12', 300/350A
	B4365TE	Cable Assembly, 15', 300/350A
27	B4903	Strain Relief
28	B4925	Locking Sleeve
29	B4924	Lead Wire
30	B4901	Quick Connect Body
31	B4916	Wave Spring
31A	B4912	Snap Ring, Small
32	B4919	Gas Pin Assembly
33	B4292	Power Pin, EZ
33A	B1199	EZ Feed Plug & Fitting
	B1199M	Connector Plug, Miller DP
	B4477	Power Pin Tip, Miller .030" - .045"
	B1199T4	Connector Plug, Tweco 4 DP
	B1199L	Connector Plug, Lincoln DP
	B1199H	Connector Plug, Hobart DP
34	B5060	Euro Connector Plug
35	B4816	Euro Connector Nut
36	285-01-001	Adaptor Support Screw
37	260-25-002	Adaptor Support
38	185-36-001	Cable Support, Spring
39	B8222	Control Pin W/ Wire
40	B4421	O-Ring
41	B43015	Liner Assembly, 15', .023" - .030"
	B43115	Liner Assembly, 15', .035" - .045"
	B44215	Liner Assembly, 15', .045" - .062"
	B43115X	Teflon Liner, 15', .035" - 3/64"
	B43015T	Liner Assembly, 15', .023" - .030" Tweco
	B43115T	Liner Assembly, 15', .035" - .045" Tweco
	B43215T	Liner Assembly, 15', .045" - .062" Tweco
	B43115XT	Teflon Liner, 15', .035" - 3/64" Tweco

**BND 300 & BND 350 Air-Cooled Mig Welding Gun**



Rating: For BND 300  
300A CO2 200A Mixed Gas  
@ 100% Duty Cycle  
.030 0.8mm to .062" 1.6mm Wire

Rating: For BND 350  
350A CO2 250A Mixed Gas  
@ 100% Duty Cycle  
.030 0.8mm to .062 1.6mm Wire

## TRG 200 Air-Cooled Mig Welding Gun

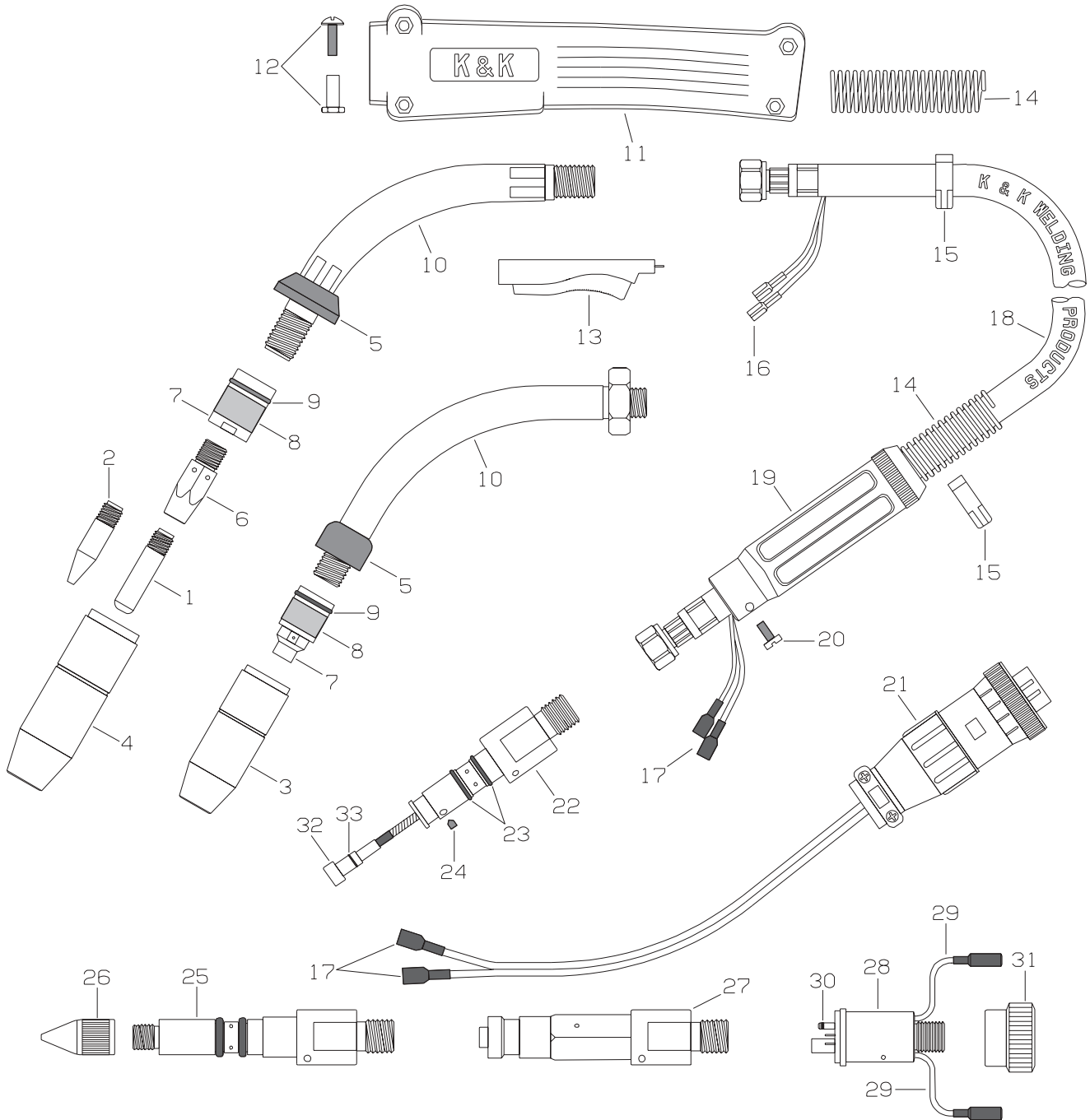


Model	Part No.			Description
	10 ft	12 ft	15 ft.	
TRG 200	R2010-35	R2012-35	R2015-35	Air Cooled MIG Welding Gun Tweco DP.
TRG 200	RE2010-35	RE2012-35	RE2015-35	Air Cooled MIG Welding Gun Euro DP.
TRG 200	RLN2010-35	RLN2012-35	RLN2015-35	Air Cooled MIG Welding Gun Lincoln DP.
TRG 200	RM2010-35	RM2012-35	RM2015-35	Air Cooled MIG Welding Gun Miller DP.

#	Part No.	Description
1	R403-23	Contact Tip, .023" 0.6 mm
	R403-30	Contact Tip, .030" 0.8 mm
	R403-35	Contact Tip, .035" 0.9 mm
	R403-40	Contact Tip, .040" 1.0 mm
	R403-45	Contact Tip, .045" 1.2 mm
2	R403-2-23	Tapered Contact Tip, .023" 0.6 mm
	R403-2-30	Tapered Contact Tip, .030" 0.8 mm
	R403-2-35	Tapered Contact Tip, .035" 0.9 mm
	R403-2-40	Tapered Contact Tip, .040" 1.0 mm
	R403-2-45	Tapered Contact Tip, .045" 1.2 mm
3	R401-4-38	Nozzle 3/8", Flush Tip TRG 200
	R401-4-50	Nozzle 1/2", 1/8" Tip Recess TRG 200
	R401-4-62	Nozzle 5/8", 1/8" Tip Recess TRG 200
	R401-4-75	Nozzle 3/4", 1/8" Tip Recess TRG 200
4	R402-5	Shock Washer TRG 200
5	R404	Gas Diffuser TRG 200
6	R154	Retaining Head TRG 150
	R402-3	Nozzle Retainer TRG 200
7	R154-1	Retaining Ring Only TRG 150
	R402-4	Retaining Ring Only TRG 200
8	R402-6	O-Ring For Nozzle Retainer TRG 200
9	R205-45	Gooseneck 200A, 45° TRG 200
	R205-60	Gooseneck 200A, 60° TRG 200
10	R208	Connector Cone TRG 200
11	R209	Cone Nut
12	R210-5K	Handle, TRG 200
12A	B1880004	Handle Screw / Nut
13	B5662	Trigger Switch TRG200
14	R213-2	Spring Guard
15	R213-1	Outer Jacket Clamp
16	R412-1	Switch Lead Connector
16A	R412-5	Female Connector
17	R213-10	Unicable Assembly, 200A, 10'
	R213-12	Unicable Assembly, 200A, 12'
	R213-15	Unicable Assembly, 200A, 15'
18	260-25-002	Adaptor Support
19	285-01-001	Screw
20	R419-7	Control Plug, Miller W/ Wire
	R419-6	Control Plug, Lincoln LN7 - LN25
21	R214K	Quick Connect Power Pin
22	R414-1	O-Ring
23	R414-2	Liner Set Screw, Euro

#	Part No.	Description
24	R214-1K	Miller Power Pin, W/ Cap
25	R414-116	Guide Cap, Miller .035"-1/16" Wire
26	R414-2K	Lincoln Power Pin
27	R425-10K	Euro Power Pin
28	R425-8	Control Pin
29	R425-9	O-Ring
30	R425-2	Hand Nut
31	R415-23-15	Liner Conduit .023", 15'
	R415-30-15	Liner Conduit .030", 15'
	R415-35-15	Liner Conduit .035", 15'
	R415-35-2	Liner Conduit .035" Alum., 15'
	R415-116-15	Liner Conduit .045"-1/16", 15'
	R415-116-2	Liner Conduit 3/64"-1/16" Alum., 15'
	R415-1	Liner O-Ring
	R213-6	Compression Clip
	R213-5	Inner Tube Clamp
	R213-4	Support Tube

**TRG 200 Air-Cooled Mig Welding Gun**



Rating: For TRG 200  
200A CO2 150A Mixed Gas  
@ 100% Duty Cycle  
.023 0.6mm to .045" 1.2mm Wire

**TRG 300 & TRG 400 Air-Cooled Mig Welding Gun**



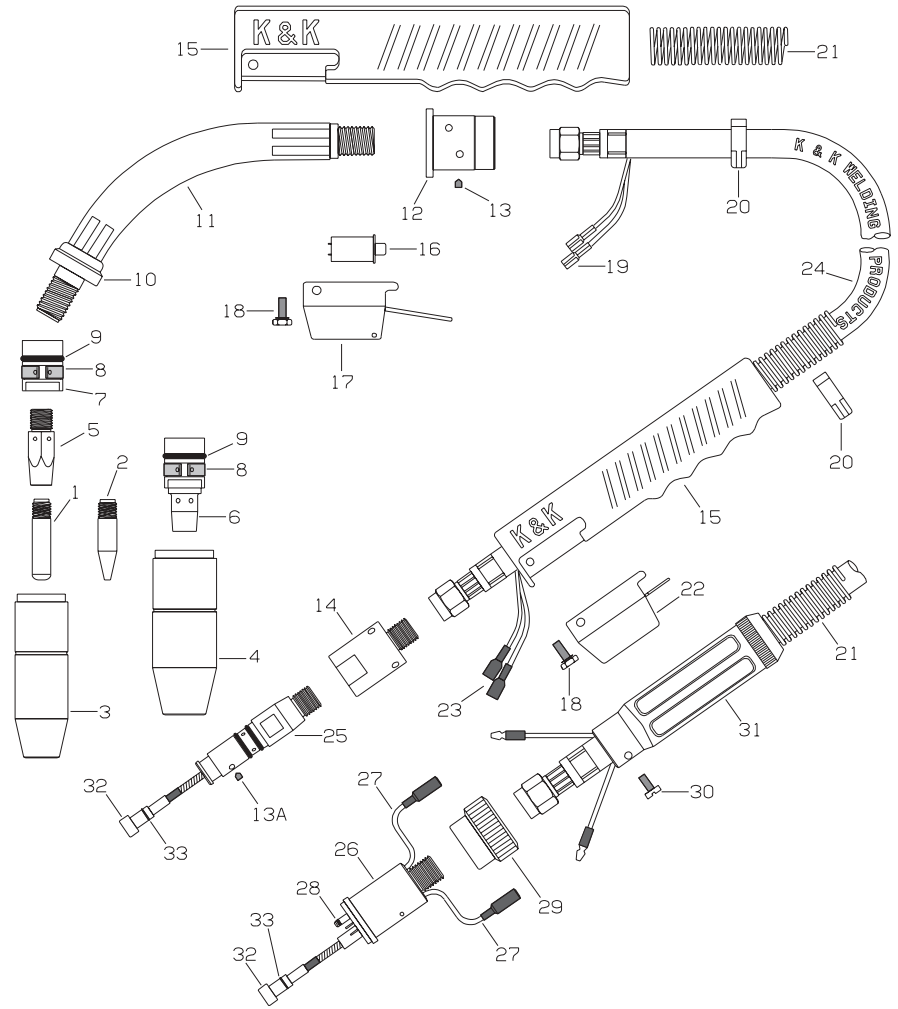
Part No. TRG-400

Model	Part No.			Description
	10 ft	12 ft	15 ft.	
TRG 300	R3010-35	R3012-35	R3015-35	Complete Gun Tweco DP.
TRG 300	RE3010-35	R3012-25	RE3015-35	Complete Gun Euro DP.
TRG 300	RLN3010-35	RLN3012-35	RLN3015-35	Complete Gun Lincoln DP.
TRG 300	RM3010-35	RM3012-35	RM3015-35	Complete Gun Miller DP.
TRG 400	R4010-45	R4012-45	R4015-45	STD Complete Gun Tweco DP.
TRG 400	R4010-45-6	R4012-45-6	R4015-45-6	H.D. Complete Gun Tweco DP.
TRG 400	RE4010-45	RE4012-45	RE4015-45	STD. Complete Gun Euro DP.
TRG 400	RM4010-45	RM4012-45	RM4015-45	STD. Complete Gun Miller DP.

#	Part No.	Description
1	R403-23	Contact Tip, .023" 0.6 mm
	R403-30	Contact Tip, .030" 0.8 mm
	R403-35	Contact Tip, .035" 0.9 mm
	R403-40	Contact Tip, .040" 1.0 mm
	R403-45	Contact Tip, .045" 1.2 mm
	R403-52	Contact Tip, .052" 1.4 mm
	R403-116	Contact Tip, 1/16" 1.6 mm
	R403-1-30	H.D. Contact Tip, .030" 0.8 mm
	R403-1-35	H.D. Contact Tip, .035" 0.9 mm
	R403-1-40	H.D. Contact Tip, .040" 1.0 mm
	R403-1-45	H.D. Contact Tip, .045" 1.2 mm
	R403-1-52	H.D. Contact Tip, .052" 1.4 mm
	R403-1-116	H.D. Contact Tip, 1/16" 1.6 mm
	R403-1-564	H.D. Contact Tip, 5/64" 2.0 mm
	R403-1-332	H.D. Contact Tip, 3/32" 2.4 mm
	R403-1-364	H.D. Contact Tip, 3/64" 1.3 mm
2	R403-2-23	Tapered Contact Tip, .023" 0.6 mm
	R403-2-30	Tapered Contact Tip, .030" 0.8 mm
	R403-2-35	Tapered Contact Tip, .035" 0.9 mm
	R403-2-40	Tapered Contact Tip, .040" 1.0 mm
	R403-2-45	Tapered Contact Tip, .045" 1.2 mm
	R403-3-30	H.D. Tapered Contact Tip, .030" 0.8 mm
	R403-3-35	H.D. Tapered Contact Tip, .035" 0.9 mm
	R403-3-40	H.D. Tapered Contact Tip, .040" 1.0 mm
	R403-3-45	H.D. Tapered Contact Tip, .045" 1.2 mm
	R403-3-52	H.D. Tapered Contact Tip, .052" 1.4 mm
	R403-3-116	H.D. Tapered Contact Tip, 1/16" 1.6 mm
3	R401-4-38	Nozzle 3/8", Flush Tip
	R401-4-50	Nozzle 1/2", 1/8" Tip Recess
	R401-4-62	Nozzle 5/8", 1/8" Tip Recess
	R401-4-75	Nozzle 3/4", 1/8" Tip Recess
	R401-8-62	Nozzle 5/8", 1/8" Tip Stickout, Short Arc
4	R401-5-50	Nozzle 1/2", 1/4" Tip Recess
	R401-5-62	Nozzle 5/8", 1/4" Tip Recess
	R401-5-75	Nozzle 3/4", 1/4" Tip Recess
	R401-6-50	Nozzle 1/2", 1/8" Tip Recess
	R401-6-62	Nozzle 5/8", 1/8" Tip Recess
	R401-6-75	Nozzle 3/4", 1/8" Tip Recess
	R401-7-62	Nozzle 5/8", 1/4" Tip Recess, Brass
	R401-7-87	Nozzle 7/8", 1/4" Tip Recess, Brass
5	R404	Gas Diffuser For Standard Tips
	R404-1	H.D. Gas Diffuser For H.D. Tips
	R404-10	Gas Diffuser, W/ Set Screw
	R404-11	H.D. Gas Diffuser, W/ Set Screw
6	R404-3	H.D. Retaining Head

#	Part No.	Description
	R404-13	H.D. Retaining Head, W/ Set Screw
7	R402-3	Nozzle Retainer
8	R454-1-2	Retaining Ring Only
9	R402-6	O-Ring For Nozzle Retainer
10	R402-5	Heavy Duty Shock Washer
11	R305-45	Gooseneck 300A, 45°
	R305-60	Gooseneck 300A, 60°
	R405-45	Gooseneck 400A, 45°
	R415-564-15	Liner Conduit 1/16"-5/64", 15'
	R415-564-25	Liner Conduit 1/16"-5/64", 25'
	R405-60	Gooseneck 400A, 60°
	R405-180	Gooseneck 400A, 180°
	R505-45	Gooseneck 500A, 45°
	R505-60	Gooseneck 500A, 60°
12	R407	Body
13	R407-2	Body Screw
13A	R414-2	Liner Set Screw
14	R414-400	Power Pin Block
15	R410	Handle, Front & Rear
16	R411-1	Switch Only
17	R411-2	Switch Housing, W/ Screws
18	R411-3	Mounting Screw (10-24)
19	R412-1	Switch Lead Connector
20	R413-1	Outer Jacket Clamp 300/400A
21	R413-2	Spring Guard, Front & Rear 300/400A
22	R416-5	Control Housing Only
23	R412-5	Female Connector
24		Cable Assemblies
25	R214	Quick Connect Power Pin (Tweco #4)
	R214-6-116	Miller Power Pin W/Cap .035"-1/16"
	R214-6-332	Miller Power Pin W/Cap 5/64"-3/32"
	R214-12	Tweco #5 Style Power Pin
	R214-2	Lincoln Power Pin (LN7-LN25)
		Power Pin Assemblies include items #14 and #25
	R414	Quick Power Pin Assy. (Tweco #4)
	R414-1	O-Ring
	R414-11-116	Miller Power Pin Assy. w/Cap .035"-1/16"
	R414-11-332	Miller Power Pin Assy. w/Cap 5/64"-3/32"
	R414-11-2	O-Ring for Miller Power Pin
	R414-116	Guide Cap, Miller .035"-1/16" Wire
	R414-332	Guide Cap, Miller 5/64"-3/32" Wire
	R414-12	Tweco #5 Style Power Pin Assy.
	R414-12-2	O-Ring for Tweco #5 Power Pin
	R414-16	Lincoln Power Pin Assy. (LN7-LN25)

**TRG 300 & TRG 400 Air-Cooled Mig Welding Gun**



Rating: For TRG 300  
300A CO2 200A Mixed Gas  
@ 100% Duty Cycle.  
.030 0.8mm to .062" 1.6mm Wire

Rating: For TRG 400  
400A CO2 300A Mixed Gas  
@ 100% Duty Cycle.  
.030 0.8mm to 5/64" 2.0mm Wire

#	Part No.	Description
26	R425-10K	Power Pin Connector, Euro
27	R425-8	Control Pin
28	R425-9	O-Ring
29	R425-2	Hand Nut
30	R425-5	Mounting Screw
31	260-25-002	Adaptor Support, Euro, 300/400A
32	R415-23-15	Liner Conduit .023", 15'
	R415-30-15	Liner Conduit .030", 15'
	R415-35-0	Teflon Liner .035" Alum., 15'
	R415-35-15	Liner Conduit .035", 15'
	R415-35-25	Liner Conduit .035", 25'
	R415-35-2	Liner Conduit .035" Alum., 15'
	R415-116-0	Teflon Liner 1/16" Alum., 15'
	R415-116-15	Liner Conduit .045"-1/16", 15'
	R415-116-25	Liner Conduit .045"-1/16", 25'
	R415-116-2	Liner Conduit 3/64"-1/16" Alum., 15'
	R415-332-15	Liner Conduit 5/64"-3/32", 15'
	R415-332-25	Liner Conduit 5/64"-3/32", 25'
33	R415-1	Liner O-Ring ( Include Cable w/ Fittings, Handles,

#	Part No.	Description
		and Spring Assemblies )
	R313-10	Unicable Assy. w/ Handles, 300A, 10'
	R313-12	Unicable Assy. w/ Handles, 300A, 12'
	R313-15	Unicable Assy. w/ Handles, 300A, 15'
	R313-20	Unicable Assy. w/ Handles, 300A, 20'
	R313-25	Unicable Assy. w/ Handles, 300A, 25'
	R413-10	Unicable Assy. w/ Handles, 400A, 10'
	R413-12	Unicable Assy. w/ Handles, 400A, 12'
	R413-15	Unicable Assy. w/ Handles, 400A, 15'
	R413-20	Unicable Assy. w/ Handles, 400A, 20'
	R413-25	Unicable Assy. w/ Handles, 400A, 25'
		( Include Cable w/ Fittings Only )
	R320-10	Unicable Assembly Only, 300A, 10'
	R320-12	Unicable Assembly Only, 300A, 12'
	R320-15	Unicable Assembly Only, 300A, 15'
	R320-20	Unicable Assembly Only, 300A, 20'
	R320-25	Unicable Assembly Only, 300A, 25'
	R420-10	Unicable Assembly Only, 400A, 10'
	R420-12	Unicable Assembly Only, 400A, 12'
	R420-15	Unicable Assembly Only, 400A, 15'
	R420-20	Unicable Assembly Only, 400A, 20'
	R520-25	Unicable Assembly Only, 400A, 25'

## TWC 200 Air-Cooled Mig Welding Gun

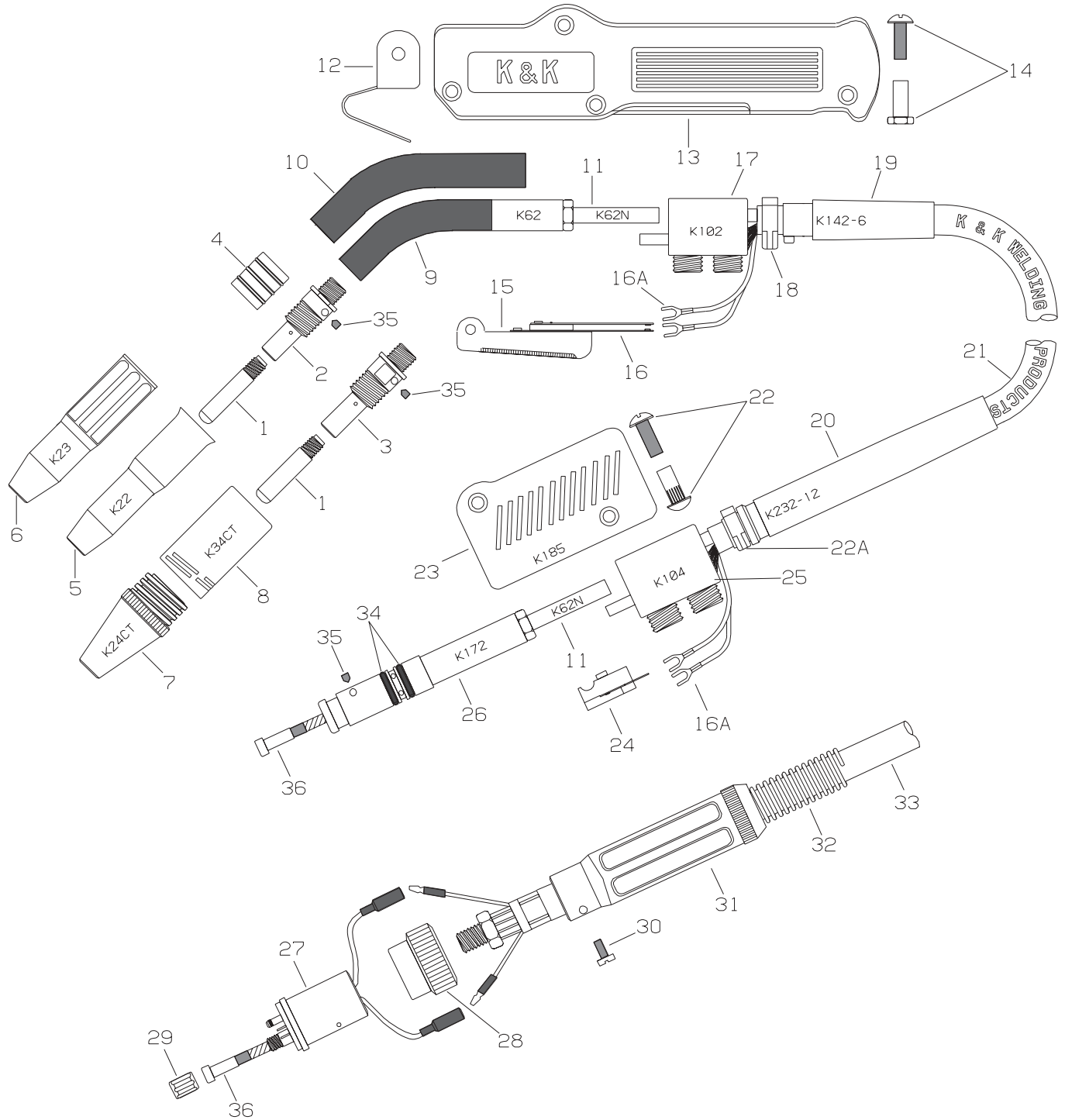


Model	Part No.			Description
	10 ft	12 ft	15 ft.	
TWC 200	K210	K212	K215	Air Cooled MIG Welding Gun Tweco DP.
TWC 200	KM210	KM212	KM215	Air Cooled MIG Welding Gun Miller DP.
TWC 200	KX210	KX212	KX215	Air Cooled MIG Welding Gun Euro DP.
TWC 200	KL210	KL212	KL215	Air Cooled MIG Welding Gun Lincoln DP.
TWC 200	KLWM210	KLWM212	KLWM215	Air Cooled MIG Welding Gun Lincoln W.M. 250

#	Part No.	Description
1	K14-23	Contact Tip, .023" 0.6 mm
	K14-30	Contact Tip, .030" 0.8 mm
	K14-35	Contact Tip, .035" 0.9 mm
	K14-40	Contact Tip, .040" 1.0 mm
	K14-45	Contact Tip, .045" 1.2 mm
	K14A-364	Contact Tip, Alum., 3/64" 1.3 mm
	K14-52	Contact Tip, .052" 1.4 mm
	K14-116	Contact Tip, .062" 1.6 mm
	K14T-23	Contact Tip, Tapered, .023" 0.6 mm
	K14T-30	Contact Tip, Tapered, .030" 0.8 mm
	K14T-35	Contact Tip, Tapered, .035" 0.9 mm
	K14T-40	Contact Tip, Tapered, .040" 1.0 mm
	K14T-45	Contact Tip, Tapered, .045" 1.2 mm
	K14T-52	Contact Tip, Tapered, .052" 1.4 mm
	K14T-116	Contact Tip, Tapered, .062" 1.6 mm
	K14H-35	Contact Tip, H.D., .035" 0.9 mm
	K14H-40	Contact Tip, H.D., .040" 1.0 mm
	K14H-45	Contact Tip, H.D., .045" 1.2 mm
	K14AH-364	Contact Tip, Alum., H.D., 3/64" 1.3 mm
	K14H-52	Contact Tip, H.D., .052" 1.4 mm
	K14H-116	Contact Tip, H.D., .062" 1.6 mm
2	K52	Gas Diffuser
3	K52FN	Gas Diffuser For Fixed Nozzle
4	K32	Nozzle Insulator
5	K22-50	Nozzle, 1/2" I.D. Adjustable
	K22-62	Nozzle, 5/8" I.D. Adjustable
	K22-37-SS	Nozzle, 3/8" I.D. Short Stop
	K22-50-SS	Nozzle, 1/2" I.D. Short Stop
	K22-62-SS	Nozzle, 5/8" I.D. Short Stop
	K22T-37-SS	Nozzle, Tapered, 3/8" I.D. Short Stop
6	K23-37	Nozzle, Self Insulated, 3/8" I.D.
	K23-50	Nozzle, Self Insulated, 1/2" I.D.
	K23-62	Nozzle, Self Insulated, 5/8" I.D.
	K23-75	Nozzle, Self Insulated, 3/4" I.D.
	K23T-37	Nozzle, Tapered, Self Insulated, 3/8" I.D.
7	K24CT-37-S	Nozzle, Coarse Thread, 3/8" I.D.
	K24CT-50-S	Nozzle, Coarse Thread, 1/2" I.D.
	K24CT-62-S	Nozzle, Coarse Thread, 5/8" I.D.
	K24CT-75-S	Nozzle, Coarse Thread, 3/4" I.D.
8	K34CT	Nozzle Insulator
9	K62A-45	Conductor Tube, 45°
	K62A-60	Conductor Tube, 60°
	K62A-80	Conductor Tube, 80°
	K62A-180	Conductor Tube, 180°
	K62A-45HD	Conductor Tube, H.D., 45°
	K62A-60HD	Conductor Tube, H.D., 60°

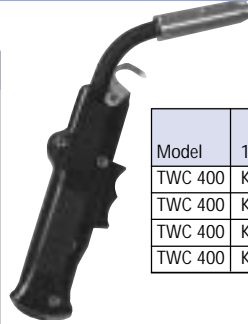
#	Part No.	Description
	K62A-80HD	Conductor Tube, H.D., 80°
	K62A-180HD	Conductor Tube, H.D., 180°
10	K72A	Replacement Neoprene Insulation
11	K62N	Gas Hose Nipple
12	K152	Gun Hanger
13	K83	Handle Case with Screws
14	K122FM	Binder Screw & Post
15	K92	Trigger Switch Assembly
16	K92C	Trigger Switch Blades
17	K102	Cable Connector Block Assy.
18	K132-12	Power Cable Clamp
19	K142-6	Power Cable Support 6"
20	K232-12	Cable Support 12"
21	K200-10	Power Cable, 10', 200 A
	K200-12	Power Cable, 12', 200 A
	K200-15	Power Cable, 15', 200 A
	K200-20	Power Cable, 20', 200 A
	K200-25	Power Cable, 25', 200 A
22	K125FM	Binder Screw & Post
22A	K134-14	Power Cable Clamp
23	K185	Connector Case W/ Screws
24	K194	Connector Tab Block Assy.
25	K104	Cable Connector Block Assy.
26	K172	Connector Plug W/ O-Rings
	K172L	Lincoln Connector Plug, #1 - #2
	K172M	Miller Connector Plug, #1 - #2
	K172H	Hobart Connector Plug, #1 - #2
27	K174EX-1	Euro-Kwik Adaptor Assy. #1 - #5
28	K174X-2	Adaptor Nut
29	K174X-1C	Conduit Nut, Euro-Kwik
30	K4M-S	Adaptor Support Screw
31	260-25-002	Adaptor Support, Euro
32	185-15-001	Cable Support, Spring
33	K200-10E	Power Cable, 10', 200 A, Euro
	K200-12E	Power Cable, 12', 200 A, Euro
	K200-15E	Power Cable, 15', 200 A, Euro
	K200-20E	Power Cable, 20', 200 A, Euro
	K200-25E	Power Cable, 25', 200 A, Euro
34	K224	O-Ring
35	K44C	Set Screw
36	K42-23-15	Liner Assy., 15' .023"
	K42-3035-15	Liner Assy., 15' .030-.035"
	K42-4045-15	Liner Assy., 15' .040-.045"
	K42-3035-25	Liner Assy., 25' .030-.035"
	K42-4045-25	Liner Assy., 25' .040-.045"
	K42N-3545-15	Nylon Liner Assy., 15' .035-.045"

**TWC 200 Air-Cooled Mig Welding Gun**



Rating:  
200A CO2 150A Mixed Gas  
@ 100% Duty Cycle  
.023 0.6mm to .045" 1.2mm Wire

## TWC 400 Air-Cooled Mig Welding Gun

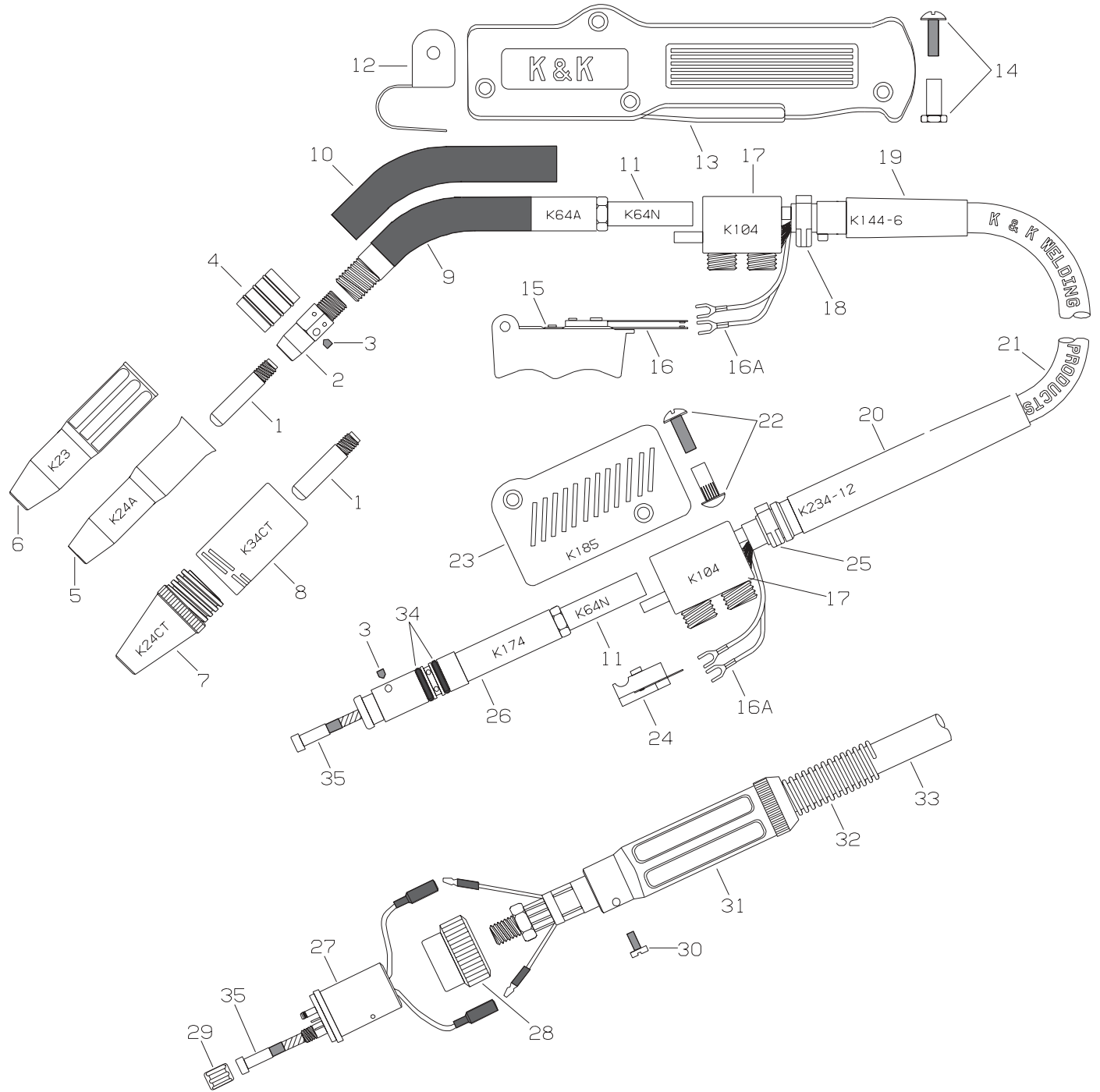


#	Part No.	Description
1	K14-30	Contact Tip, .030" 0.8 mm
	K14-35	Contact Tip, .035" 0.9 mm
	K14-40	Contact Tip, .040" 1.0 mm
	K14-45	Contact Tip, .045" 1.2 mm
	K14A-364	Contact Tip, Alum., 3/64" 1.3 mm
	K14-52	Contact Tip, .052" 1.4 mm
	K14-116	Contact Tip, .062" 1.6 mm
	K14-564	Contact Tip, 5/64" 2.0 mm
	K14T-30	Contact Tip, Tapered, .030" 0.8 mm
	K14T-35	Contact Tip, Tapered, .035" 0.9 mm
	K14T-40	Contact Tip, Tapered, .040" 1.0 mm
	K14T-45	Contact Tip, Tapered, .045" 1.2 mm
	K14T-52	Contact Tip, Tapered, .052" 1.4 mm
	K14T-116	Contact Tip, Tapered, .062" 1.6 mm
	K14H-35	Contact Tip, H.D., .035" 0.9 mm
	K14H-40	Contact Tip, H.D., .040" 1.0 mm
	K14H-45	Contact Tip, H.D., .045" 1.2 mm
	K14AH-364	Contact Tip, Alum., H.D., 3/64" 1.3 mm
	K14H-52	Contact Tip, H.D., .052" 1.4 mm
	K14H-116	Contact Tip, H.D., .062" 1.6 mm
	K14H-564	Contact Tip, H.D., 5/64" 2.0 mm
2	K54A	Gas Diffuser
3	K44C	Set Screw
4	K34A	Nozzle Insulator
5	K24A-50	Nozzle, Adjustable, 1/2" I.D.
	K24A-62	Nozzle, Adjustable, 5/8" I.D.
	K24A-75	Nozzle, Adjustable, 3/4" I.D.
	K24A-37-SS	Nozzle, Short Stop, 3/8" I.D.
	K24A-50-SS	Nozzle, Short Stop, 1/2" I.D.
	K24A-62-SS	Nozzle, Short Stop, 5/8" I.D.
	K24A-75-SS	Nozzle, Short Stop, 3/8" I.D.
	K24AT-37-SS	Nozzle, Tapered, 3/8" I.D.
6	K23-37	Nozzle, Self Insulated, 3/8" I.D.
	K23-50	Nozzle, Self Insulated, 1/2" I.D.
	K23-62	Nozzle, Self Insulated, 5/8" I.D.
	K23-75	Nozzle, Self Insulated, 3/4" I.D.
	K23T-37	Nozzle, Tapered, 3/8" I.D.
	K23H-50	Nozzle, H.D., Self Insulated, 1/2" I.D.
	K23H-62	Nozzle, H.D., Self Insulated, 5/8" I.D.
	K23H-75	Nozzle, H.D., Self Insulated, 3/4" I.D.
7	K24CT-37-S	Nozzle, Coarse Thread, 3/8" I.D.
	K24CT-50-S	Nozzle, Coarse Thread, 1/2" I.D.
	K24CT-62-S	Nozzle, Coarse Thread, 5/8" I.D.
	K24CT-75-S	Nozzle, Coarse Thread, 3/4" I.D.
8	K34CT	Nozzle Insulator
9	K64A-45	Conductor Tube, 45°
	K64A-60	Conductor Tube, 60°
	K64A-80	Conductor Tube, 80°
	K64A-180	Conductor Tube, 180°
	K64A-45HD	Conductor Tube H.D., 45°
	K64A-60HD	Conductor Tube H.D., 60°
	K64A-80HD	Conductor Tube H.D., 80°
	K64A-180HD	Conductor Tube H.D., 180°

Model	Part No.			Description
	10 ft	12 ft	15 ft.	
TWC 400	K410	K412	K415	Air Cooled MIG Welding Gun Tweco DP.
TWC 400	KM410	KM412	KM415	Air Cooled MIG Welding Gun Miller DP.
TWC 400	KX410	KX412	KX415	Air Cooled MIG Welding Gun Euro DP.
TWC 400	KL410	KL412	KL415	Air Cooled MIG Welding Gun Lincoln DP.

#	Part No.	Description
10	K74A	Replacement Neoprene Insulation
11	K64N	Gas Hose Nipple
12	K154	Gun Hanger
13	K84A	Handle Case with Screws
14	K124FM	Binder Screw & Post
15	K94R	Trigger Switch Assembly
16	K94C	Trigger Switch Blades
16A	K244	Control Wire Terminal
17	K104	Cable Connector Block Assy.
18	K134-14	Power Cable Clamp
19	K144-6	Power Cable Support 6"
20	K234-12	Cable Support 12"
21	K400-10	Power Cable, 10', 400A
	K400-12	Power Cable, 12', 400A
	K400-15	Power Cable, 15', 400A
	K400-20	Power Cable, 20', 400A
	K400-25	Power Cable, 25', 400A
22	K125FM	Binder Screw & Post
23	K185	Connector Case W/ Screws
24	K194	Connector Tab Block Assy.
25	K134-16	Power Cable Clamp
26	K174	Connector Plug W/ O-Rings
	K174L	Lincoln Connector Plug, #3 - #4
	K174M	Miller Connector Plug, #3 - #4
27	K174EX-1	Euro-Kwik Adaptor Assy. #1 - #5
28	K174X-2	Adaptor Nut
29	K174X-1C	Conduit Nut, Euro-Kwik
30	K4M-S	Adaptor Support Screw
31	260-25-002	Adaptor Support, Euro
32	185-36-001	Cable Support, Euro
33	K400-10E	Power Cable, 10', 400A, Euro
	K400-12E	Power Cable, 12', 400A, Euro
	K400-15E	Power Cable, 15', 400A, Euro
	K400-20E	Power Cable, 20', 400A, Euro
	K400-25E	Power Cable, 25', 400A, Euro
34	K224	O-Ring
35	K44-3545-15	Liner Assy., 15' .035-.045"
	K44-116-15	Liner Assy., 15' .062"
	K44-564-15	Liner Assy., 15' 5/64"
	K44-3545-25	Liner Assy., 25' .035-.045"
	K44-116-25	Liner Assy., 25' .062"
	K44-564-25	Liner Assy., 25' 5/64"
	K44N-3545-15	Nylon Liner Assy., 15' .035-.045"
	K44N-116-15	Nylon Liner Assy., 15' .062"

**TWC 400 Air-Cooled Mig Welding Gun**



Rating:  
400A CO2 300A Mixed Gas  
@ 100% Duty Cycle  
.030 0.8mm to 5/64" 2.0mm Wire